

VICTORIA'S NEPM AIR MONITORING PLAN

Publication 828

January 2002

In June 1998 the National Environment Protection Measure for Ambient Air Quality (AAQ NEPM) set national standards for sulfur dioxide (SO₂), carbon monoxide (CO), nitrogen dioxide (NO₂), ozone (O₃), lead (Pb) and particles smaller than 10µm (PM₁₀). Each State and Territory jurisdiction is required to report annually on its compliance with the measure, including in its report an analysis of the extent to which these standards are met. As a first step, each jurisdiction must develop a monitoring plan approved under the NEPM, setting out how the jurisdiction proposes to monitor air quality for the purposes of this measure. Victoria has led the way by being the first State to receive national approval for its air quality monitoring system.

EPA has monitored air pollution extensively in the Port Phillip and Latrobe Valley regions for many years. However, the requirements of the AAQ NEPM for national consistency have required some changes in the details of monitoring techniques and an expansion of the regions considered to include all population centres larger than 25,000 (as shown in figure 1).

All six pollutants are not monitored at all the nominated monitoring stations. Provision has been made to reduce or exclude monitoring of a pollutant in a region where it can be clearly seen to comply with the standards. This can be demonstrated, for example, by comparison with a larger region with similar air emissions. A summary of the AAQ NEPM monitoring is shown in Table 1.

'Campaign' monitoring, typically of one year's duration, will also be conducted for PM₁₀ in the regional centres identified – Warrnambool, Mildura, Shepparton-Mooroopna, Bendigo and Ballarat – to complement and validate the screening criteria used to assess the monitoring requirements for those regions. Additional campaigns will also be run for ozone in outer metropolitan areas of Melbourne.

The fact that Victoria's monitoring plan has passed through the technically rigorous approval procedure can provide Victorians with great confidence in our air monitoring system. The monitoring will be carried out via National Association of Testing Authorities (NATA) certified methods, and annual reports will be provided on the status of Victoria's air quality against the NEPM standards. These will include a description of the circumstances which led to any exceedences of the standards.

EPA is committed to providing the community with up-to-date, location specific air quality data through its website (www.epa.vic.gov.au), in addition to its printed annual reports. The website gives access to current (updated hourly) monitoring results in the Port Phillip Region, daily, weekly and annual summaries and background information on air quality. Twice-daily air quality bulletins are also disseminated through the media.

The monitoring plan is available on EPA's website or by contacting the EPA's Information Centre on (03) 9695 2722.

VICTORIA'S NEPM AIR MONITORING PLAN

Table 1: Summary of AAQ NEPM monitoring

Station name	Location	O ₃	NO ₂	PM ₁₀	CO	SO ₂	Pb
Inner East Metro	Alphington	✓	✓	✓	✓	✓	
Inner West Metro	Footscray	✓	✓	✓			
Southwest Metro	Paisley					✓	
Outer West Metro	Pt Cook	✓	✓				
North West Metro	Site to be finalised	✓					
South Metro	Brighton	✓	✓	✓			
South East Metro	Dandenong	✓		✓			
CBD	RMIT		✓	✓	✓	✓	
CBD South East	Richmond			✓	✓		
CBD North East	Collingwood						✓
Outer East Metro	Site to be finalised	✓		✓			
Geelong	Geelong South	✓	✓	✓	✓	✓	
Outer Geelong	Pt Henry	✓					
Latrobe Valley East Central	Traralgon	✓	✓	✓		✓	
Latrobe Valley West Central	Moe	✓	✓	✓		✓	

VICTORIA'S NEPM AIR MONITORING PLAN

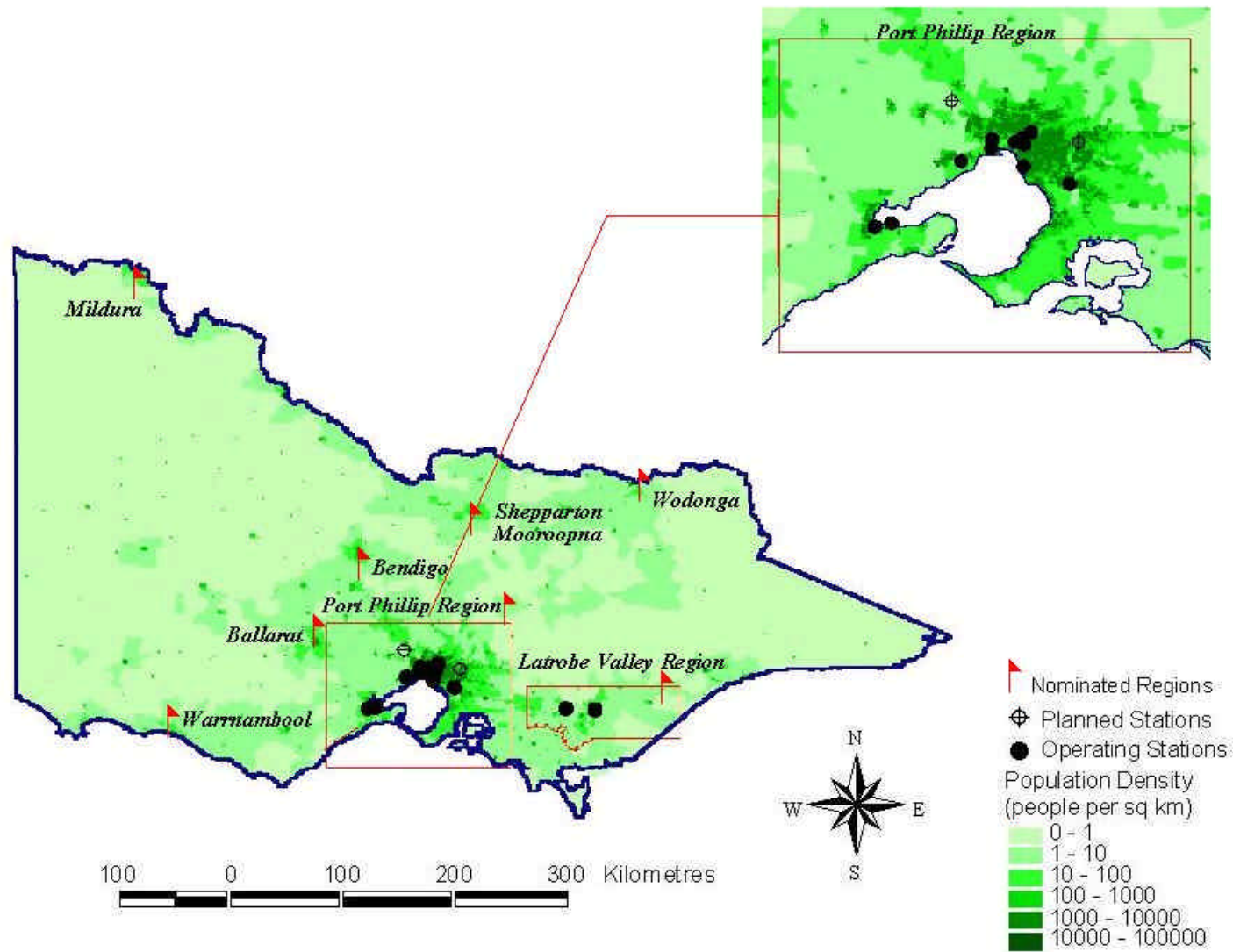


Figure 1: AAQ NEPM regions and population density in Victoria